



## WING WALL MODIFICATION

<b>Bulletin Type:</b>	SRP	<b>Publication Date:</b>	May 2022
<b>Bulletin #(s):</b>	22-062	<b>Make(s):</b>	Jayco & Entegra Coach
<b>Job Code(s):</b>	<i>If affected unit has warranty remaining, submit your claim following the normal process</i>	<b>Model(s):</b>	Seneca, Seneca, Prestige, Accolade, Accolade XL
<b>Flat Rate(s):</b>		<b>Model Year(s):</b>	2022 & Prior

<b>Incident:</b>	Excess flexing, squeaking, or cracking at transition between cab and house.
<b>Affected Units:</b>	Certain 2022 & Prior Jayco Seneca & Seneca Prestige; Entegra Coach Accolade & Accolade XL
<b>Parts List:</b>	N/A
<b>Misc. Tools &amp; Supplies:</b>	2 - Wing Wall Plywood (Contact Jayco Parts to order) 2 - 10 OZ Quad Glue (Purchase Locally) 45 - #10 by 1", 3/8 hex head self-tappers (Purchase Locally) 8 - #10 by 1", 3/8 hex head, self-tapping screws (Purchase Locally)
<b>Parts Return Information:</b>	N/A

## INTERIOR WING WALL INSPECTION

- 1) Begin by partially removing the décor wing to confirm whether interior wing was used ILO wings, interior backer (Figure 2A). Units with just the interior wing backer (Figure 2A) need to have the modified interior wing wall (Figure 1A) installed. Please proceed to the Instructions.

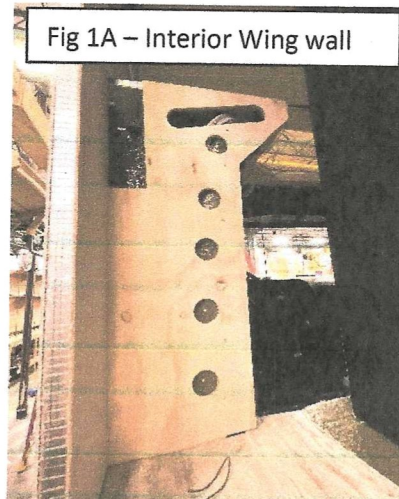


Fig 1A – Interior Wing wall

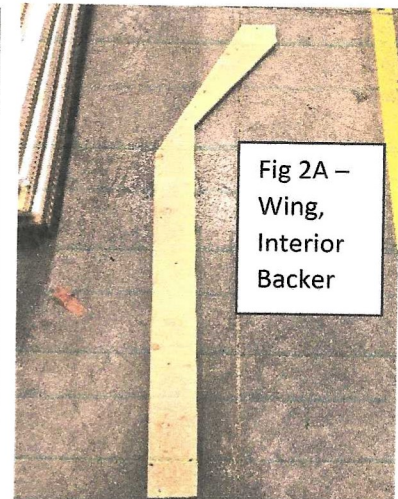
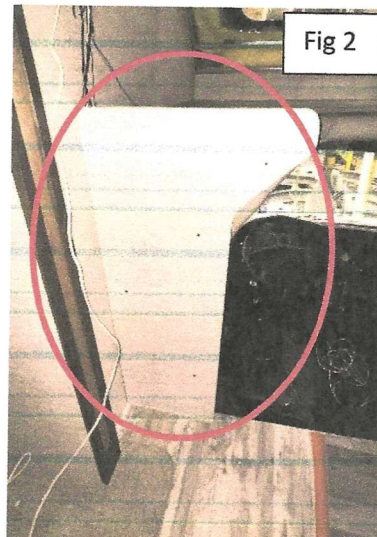
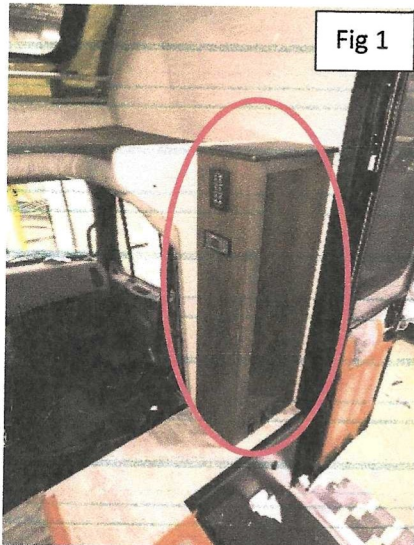


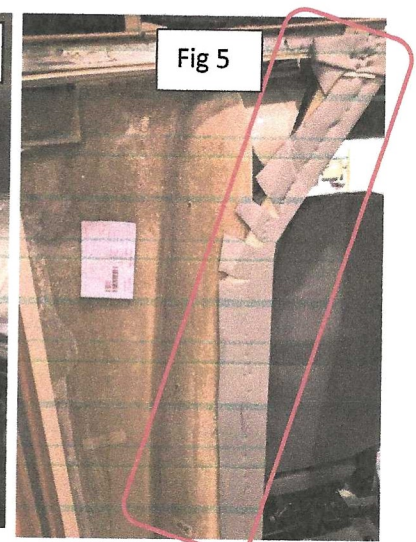
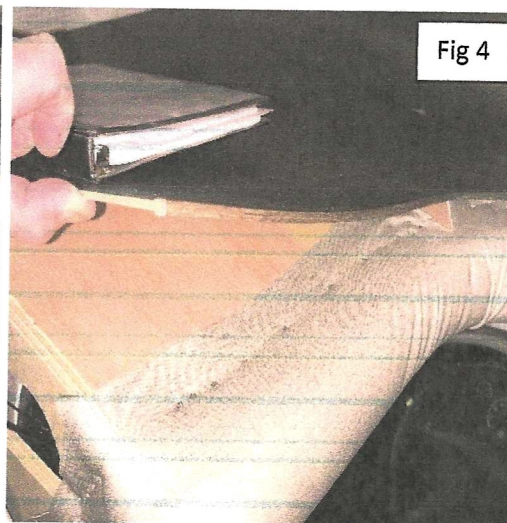
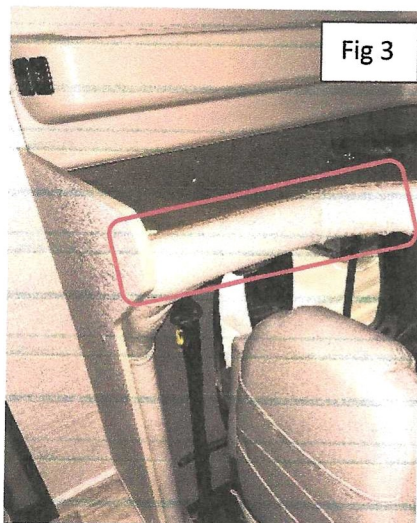
Fig 2A – Wing, Interior Backer

## WING WALL MODIFICATION INSTRUCTIONS

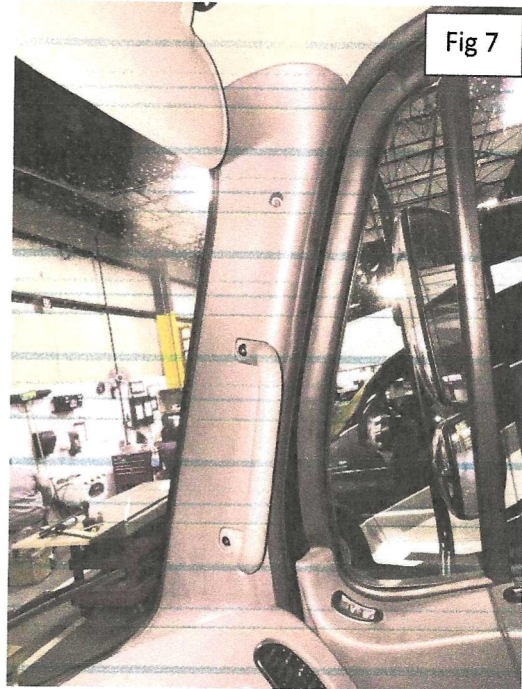
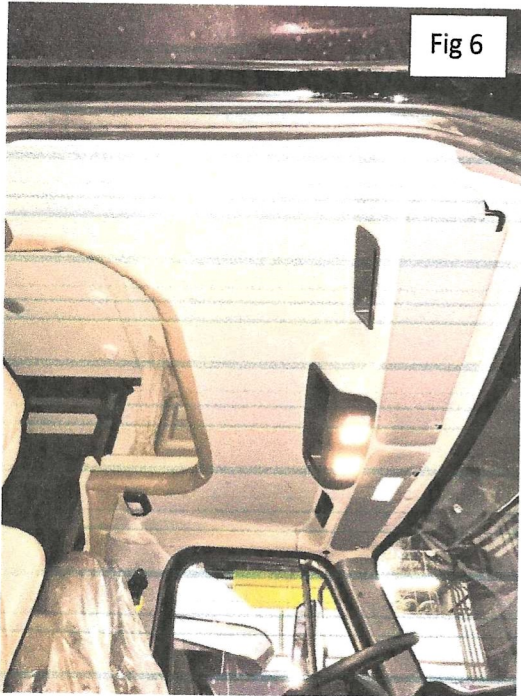
- 1) Start by removing the cabinet from passenger side wing wall. Find screws behind interior cover paneling shown in Figure 1.
- 2) Remove wing wall décor board panel from left to right shown in Figure 2.
- 3) Remove the button covers and screws securing décor board shown in Figure 3.



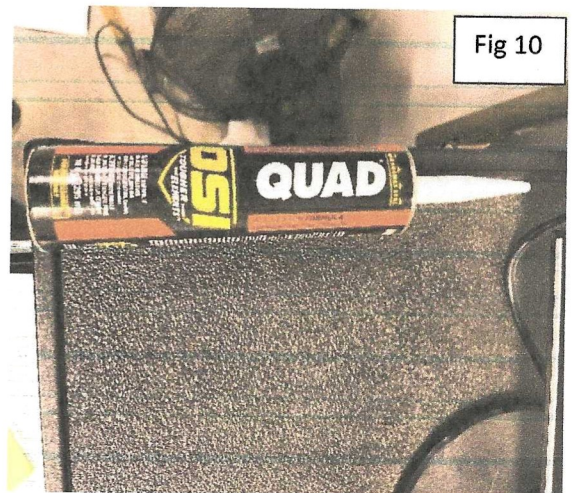
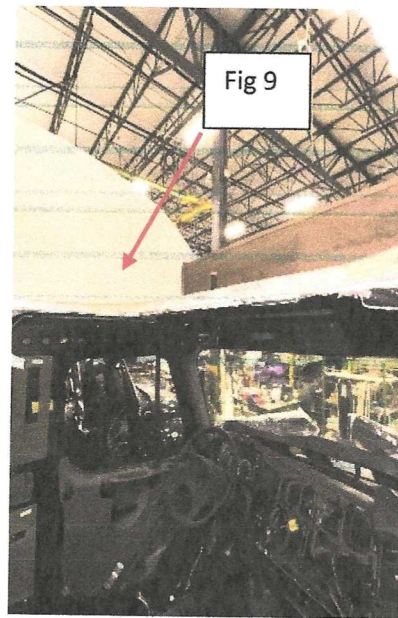
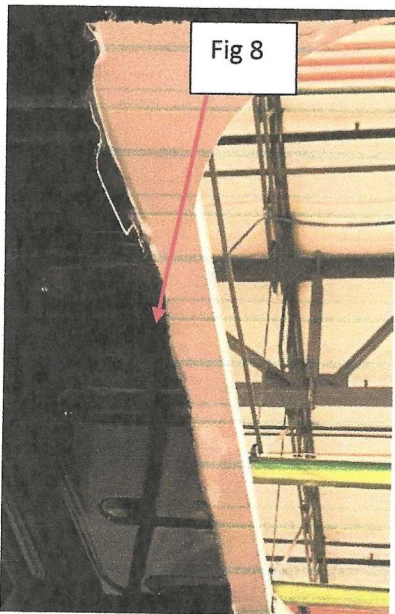
- 4) Remove the horseshoe fabric trim that connects the bed to the driver side ceiling. (Figure 3)
- 5) Place bunk mattress in safe place. Then remove staples and screws from foam bumper tube to access bunk wood panel. (Figure 4)
- 6) Proceed by removing the wing interior backer from under the stapled fabric. (Figure 5)



- 7) Remove all components from the cab headliner and side headliner for access. (Figure 6) Then add adhesive and screws to secure metal cab to wood cab over bunk. Continue by removing map lights, sun visors, air horn pull line, overhead storage, light bar, buttons (4) windshield, grab handle and "A" pillars between doors, and windshield. (Figures 6 & 7)



- 8) Pry and loosen metal cab from wooden cab over bed figure 8 & 9.  
 9) Add glue (Figure 10) (one 10 oz. tube) between cab over bed and metal cab roof.



- 10) Add #10 by 1" 3/8 hex head self-tappers, every 2" up through meatal cab into the cab over bed wood deck and around the perimeter of the cab cutout horseshoe.

11) Using a right angle screw gun attachment, glue and screw 1"x4" backer to wall end where new wing wall plywood will be installed. Add the new plywood wing wall by fastening it to the cleats, bunk, and radius side, screw to fiberglass and B pillar. (Figure 11)

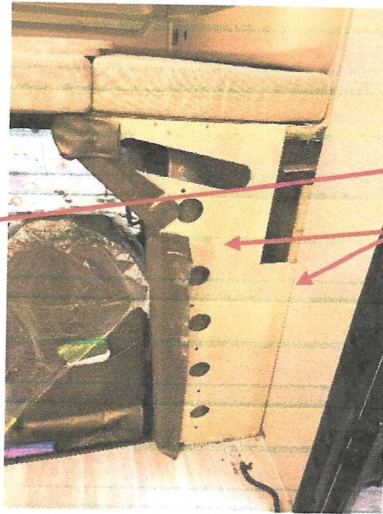


Fig 11

Backer, 1"x4", is added to the front end of the sidewall to fasten interior wing wall.

The new wing wall plywood will need to be cut to fit beside the wall and on top of the floor in front of the added backer to be secured.

12) Add glue and screws to the perimeter of the wing wall plywood into 1"x4" backer added to the end of the wall. (Figure 12 & 13)



Fig 12

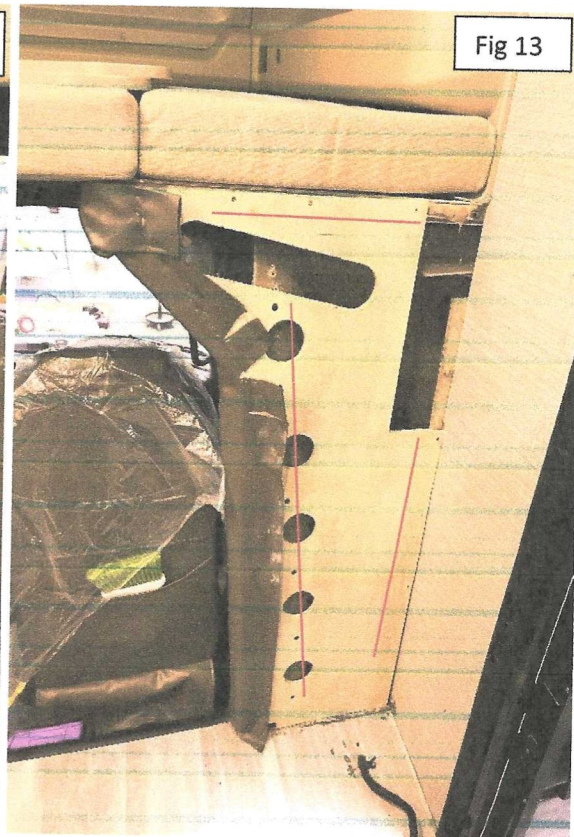
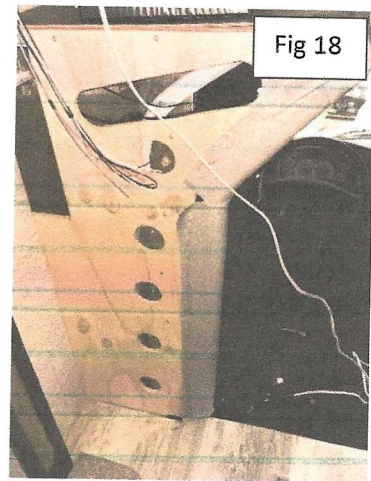
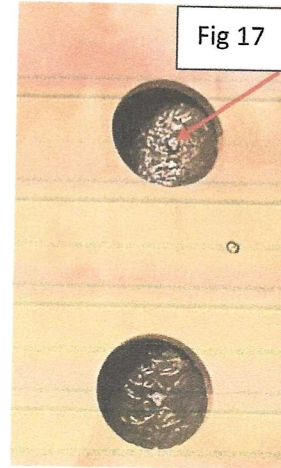
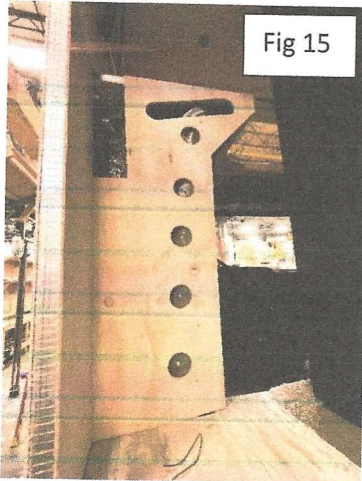
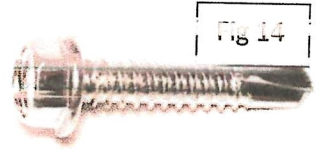


Fig 13

13) Add 3/8" lags (Figure 14) through holes in plvwood wing wall to fasten fiberglass to B pillar. Approximately 1" inward from the 90 Degree corner, install #10 by 1", 3/8 hex head, self-tapping screws through the fiberglass into the cab shown in Figures 15-18. Figure 17 shows an example of how a lag should be installed.



14) Reinstall all components in reverse order.

*Jayco's sole obligation under our limited warranty is to repair or replace defective materials and/or workmanship deemed our responsibility as determined by Jayco in our sole discretion. Jayco reserves the right to use new and/or remanufactured parts or materials of similar quality to complete any work, and to make parts and/or design changes as appropriate without notice to anyone. Jayco designs and/or materials changes are done without obligation to incorporate such changes in previously manufactured product. Jayco makes every reasonable effort to ensure field remedies will not adversely affect performance and/or safety of the unit. This field remedy is not intended to extend to future performance of this RV, or any of its materials, components or parts beyond the standard warranty period. The RV owner's obligation to notify Jayco, or one of its independent, authorized dealers, of a claimed defect does not modify any obligation placed on the RV owner to contact Jayco directly when attempting to pursue remedies under state or federal law.*

903 South Main Street • P.O. Box 460 • Middlebury, IN 46540